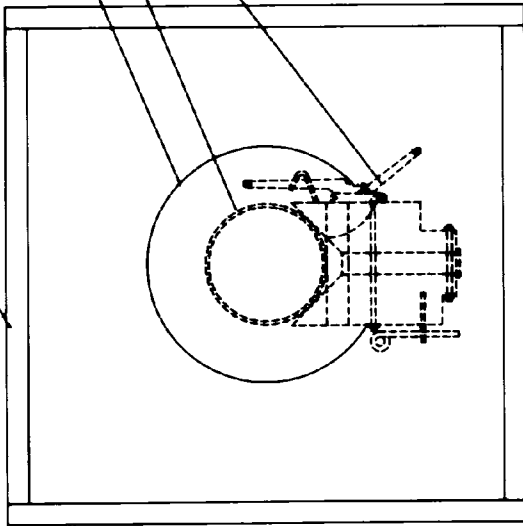
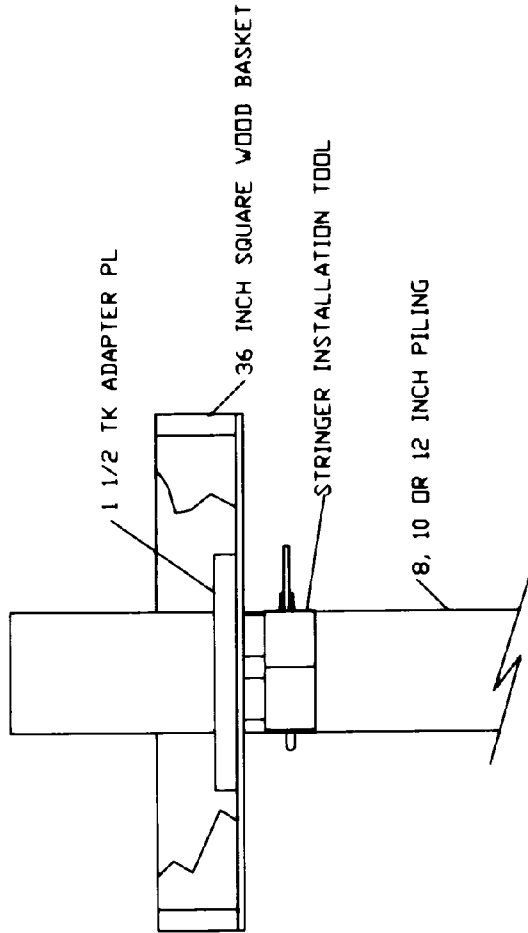


36 INCH SQUARE WOOD BASKET



# DIRECTIONS FOR USE

1. CLAMP "STRINGER TOOL" APPROXIMATELY 6 INCHES BELOW TOP OF PILING TO BE FILLED
2. PLACE BASKET ON "STRINGER TOOL" - ASSURE THAT PIN FITS IN TOOL
3. PLACE ADAPTER PLATE OVER PILING TO BOTTOM OF BASKET
4. REMOVE ALL SPILLED CEMENT BEFORE REMOVING BASKET



REVISIONS		DATE		DESCRIPTION	
1	INITIAL	APPROXIMATELY	6 INCHES	BELOW	TOP OF PILING
2	TO BE	FILLED			
3	TO PLACE	BASKET	ON	"STRINGER	TOOL"
4	TO ASSURE	THAT	PIN	FITS	IN
5	TO PLACE	ADAPTER	PLATE	OVER	PILING
6	TO	REMOVE	ALL	SPILLED	CEMENT
7	BEFORE	REMOVING	BASKET		
8					
9					
10					
11					
12					
13					
14					
15					
16					
17					
18					
19					
20					
21					
22					
23					
24					
25					
26					
27					
28					
29					
30					
31					
32					
33					
34					
35					
36					
37					
38					
39					
40					
41					
42					
43					
44					
45					
46					
47					
48					
49					
50					
51					
52					
53					
54					
55					
56					
57					
58					
59					
60					
61					
62					
63					
64					
65					
66					
67					
68					
69					
70					
71					
72					
73					
74					
75					
76					
77					
78					
79					
80					
81					
82					
83					
84					
85					
86					
87					
88					
89					
90					
91					
92					
93					
94					
95					
96					
97					
98					
99					
100					

**CONCRETE CATCH BASIN**

SeaCure Docking Systems Inc.  
 Urbanna, Virginia

DATE: AUGUST 25, 2008

PROJECT: SDI-000025